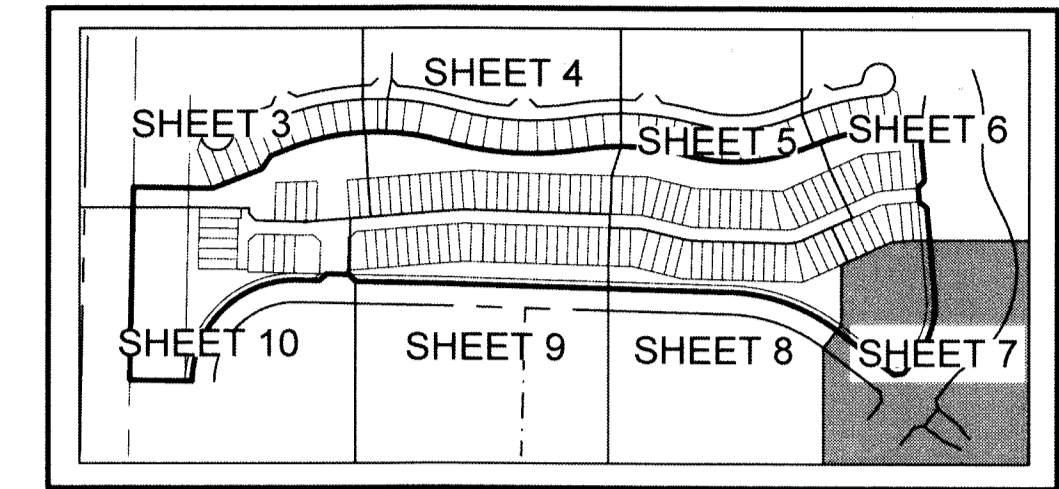


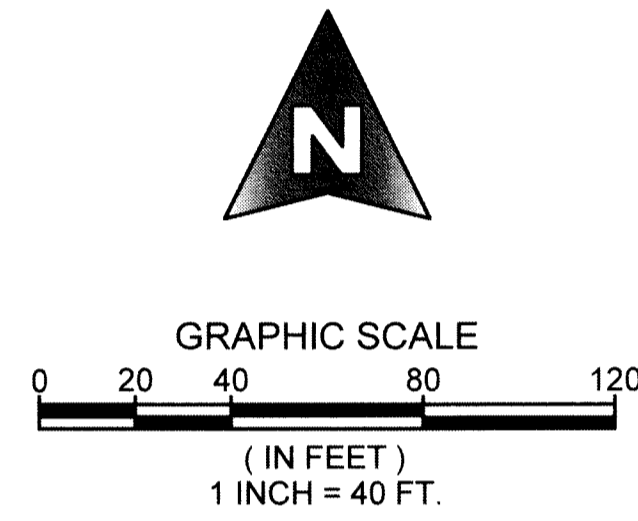
ARDEN P.U.D. POD K

BEING A REPLAT OF A PORTION OF TRACT "FD", ARDEN P.U.D. PLAT 1, AS RECORDED IN PLAT BOOK 122, PAGES 32 THROUGH 51, PUBLIC RECORDS OF PALM BEACH COUNTY, FLORIDA, AND LYING IN SECTION 33, TOWNSHIP 43 SOUTH, RANGE 40 EAST, PALM BEACH COUNTY, FLORIDA.

82



KEY MAP
NOT TO SCALE



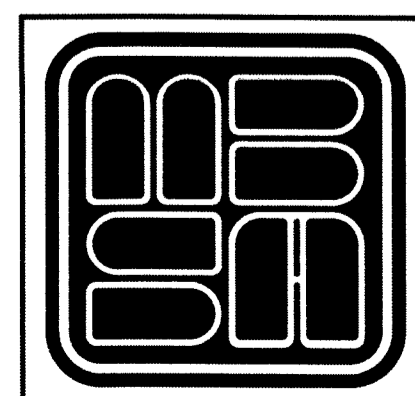
LEGEND

- P.O.C. = POINT OF COMMENCEMENT
- P.O.B. = POINT OF BEGINNING
- P.C.P. = PERMANENT CONTROL POINT
- P.R.M. = PERMANENT REFERENCE MONUMENT
- O.R.B. = OFFICIAL RECORD BOOK
- P.B. = PLAT BOOK
- PGS. = PAGES
- D.B. = DEED BOOK
- P.B.C. = PALM BEACH COUNTY
- R.W. = RIGHT OF WAY
- C.L. = CENTERLINE
- U.E. = UTILITY EASEMENT
- D.E. = DRAINAGE EASEMENT
- R. = RADIUS
- L. = ARC LENGTH
- Δ = CURVE CENTRAL ANGLE
- ⊙ = FOUND PALM BEACH COUNTY DISK IN CONCRETE
- ⊙ = SET NAIL AND ALUMINUM DISK, STAMPED P.C.P. LB 2438
- ⊙ = SET 4"x4"x24" C.M. WITH ALUMINUM DISK, STAMPED PRM LB 2438
- ⊙ = FOUND MAG NAIL AND 1 1/4" BRASS WASHER STAMPED PRM LB 2438
- ⊙ = FOUND 4"x4"x24" C.M. WITH ALUMINUM DISK, STAMPED P.R.M. LB 2438
- ⊙ = LAKE MAINTENANCE EASEMENT
- L.M.E. = LAKE MAINTENANCE EASEMENT
- C.L. = CHORD LENGTH
- C.B. = CHORD BEARING
- L.M.A.E. = LAKE MAINTENANCE ACCESS EASEMENT
- R.L. = RADIAL LINE
- N. = NOTHING, WHEN USED WITH COORDINATES
- E. = EASTING, WHEN USED WITH COORDINATES
- S.E. = SEWER EASEMENT
- W.E. = WATER EASEMENT
- L.A.E. = LIMITED ACCESS EASEMENT
- L.S.E. = LIFT STATION EASEMENT
- FD. = FOUND
- OA. = OVERALL
- C.M. = CONCRETE MONUMENT
- F.P.L. = FLORIDA POWER AND LIGHT
- LE. = LANDSCAPE EASEMENT
- NO. = NUMBER
- P.B.C.U.E. = PALM BEACH COUNTY UTILITY EASEMENT
- P.S.M. = PROFESSIONAL SURVEYOR AND MAPPER
- D.O.T. = DEPARTMENT OF TRANSPORTATION
- FDOT. = FLORIDA DEPARTMENT OF TRANSPORTATION
- P.U.D. = PLANNED UNIT DEVELOPMENT
- W.M.E. = WATER MANAGEMENT EASEMENT
- W.M.A.E. = WATER MANAGEMENT ACCESS EASEMENT
- S.E. = SIDEWALK EASEMENT
- NPBCID. = NORTHERN PALM BEACH COUNTY IMPROVEMENT DISTRICT
- LB. = LICENSE NUMBER
- EB. = PROFESSIONAL SURVEYOR BUSINESS LICENSE NUMBER
- P.C. = POINT OF CURVATURE
- P.T. = POINT OF TANGENCY
- P.R.C. = POINT OF REVERSE CURVATURE
- N.T. = POINT OF NON TANGENCY
- SECTION 33/28-43-40. = SECTIONS 33 AND 28, TOWNSHIP 43 SOUTH, RANGE 40 EAST
- OHME. = OVERHANG MAINTENANCE EASEMENT
- = MATCH LINE
- ⊕ = SECTION CORNER
- ⊙ = 1/4 SECTION CORNER

COORDINATE NOTE:
STATE PLANE COORDINATES SHOWN ARE GRID DATUM, NAD 83, 1990 ADJUSTMENT, FLORIDA EAST ZONE, COORDINATE SYSTEM 1983 STATE PLANE, TRANSVERSE MERCATOR PROJECTION
LINEAR UNIT = US SURVEY FEET
ALL DISTANCES ARE GROUND
SCALE FACTOR = 0.99999219
GROUND DISTANCE X SCALE FACTOR = GRID DISTANCE
BEARINGS AS SHOWN HEREON ARE GRID DATUM, NAD 83, 1990 ADJUSTMENT, FLORIDA EAST ZONE.

S. 1/4 CORNER OF SECTION 33
TOWNSHIP 43 S., RANGE 40 E.
NOT FOUND
N=853367.3530, E=866662.5440
(PALM BEACH COUNTY POSITION)

E. 1/4 CORNER OF SECTION 33
NOT FOUND
N=855927.9140, E=869349.5975
(CALCULATED POSITION)



MICHAEL B. SCHORAH & ASSOCIATES, INC.
1850 FOREST HILL BLVD., SUITE 206
WEST PALM BEACH, FLORIDA 33406
EB# 2438 TEL. (561) 968-0080 FAX. (561) 642-9726 LB# 2438

ARDEN P.U.D. POD K